

ENVIRONMENTAL PROGRAMS: A KUUF Resource List

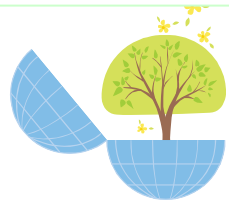


Get Involved !

Here is a list of the environmental activities that KUUF members are engaged in. Join in to help make our community a greener place. The name of the person leading the activities is listed. If you have new ideas that you would like to try, let us know. Contact Pete Ekstrom, [pekstrom \(at\) rhodes.edu](mailto:pekstrom(at)rhodes.edu) to get connected.

Carbon Offset

- KUUF established a Carbon Offset fund in 2008, and has formed a carbon tax study group.- Bill Leder



Education

- Bird Walks – Tom Hoornstra
- Nature Walks – Rachael McDonald
- Global Climate Change Interest group – Bethany Stephens
- Carbon Footprint. Take an online test to see what your Carbon Footprint is <http://www.nature.org/initiatives/climatechange/calculator/>
- Movie Night, monthly movies and discussion of green ideas – Sydney Morris
- Organize forums by local sustainability groups to highlight their activities and volunteer possibilities – Joan Chadde
- Partner with local Environmental groups to do Conservation Education –Joan Chadde, Watershed Protection Education (signs, articles, workshops) – Cory McDonald, and Conservation Work (invasive species removal) - Rachel McDonald



Sharing Information

The following lists and maps will be placed on the KUUF website, once they are developed.

- Develop a list of local growers and stores that carry local produce – Linda Rulison/ Joan Chadde
- Develop a list of books on sustainability, fuel efficiency, etc. – Alice Boyce
- Develop a collection of Environmental articles. – Barry Pegg (content) Harriet (website)
- Develop a list of good places to bike - Tom Hoornstra
- Develop GIS green maps - Carol Ekstrom
- Walking Paths and Protected Areas of the Keweenaw, a guide to sanctuaries and preserves in Houghton and Keweenaw counties open to non-motorized recreation by the public, editor, Joan Chadde, printed by Book Concern, Hancock MI, \$14.95 at local bookstores.



Politics

- Get MI water proposal on 2010 ballot – Linda Rulison
- Attend city council meetings, local hearings – Dave Rulison
- Work on better community planning /zoning/transportation – Jim Boyce
- Tax on plastic water bottles – Carol Kurz

Recycling

- Recycling group to work on new ideas such as:
 - Work with MTU to use new recycler.- Harriet King (Kristine Bradof)
 - Plan voluntary neighborhood recycling drives – Allan Baker
 - Develop plan to recycle glass.



Hands-Ons Activities

- Making Nature trail – Jim Belote and Pete Ekstrom
- Removing Invasive species – Rachel McDonald

Updates

- Environmental activity updates on the KUUF website -Harriet King
- Weekly announcements at the Sunday service—everyone

Good Ideas

- Buy locally grown foods (200 mi. radius)
- Start your own garden
- Bundle your errands
- Use LED and motion sensor lighting
- Conserve Water by consuming less “stuff”
- Choose energy efficient appliances
- Start a compost pile
- Plant trees
- Set thermostat at 68 day, lower at night
- Conduct an energy audit



- Carpool, or ride a bike



Other Environmental Organizations in the Area

Copper Country Audubon Club

http://www.coppercountry.com/cat_index_202.php

Friends of the Land of Keweenaw (FOLK) – Linda Rulison

<http://www.folkup.org/>

Gratiot Lake Conservancy

<http://www.mlswa.org/Gratiot-Lake-1508/>

Houghton Keweenaw Conservation District

<http://www.hkconserve.com/>

Keweenaw Land Trust

<http://www.keweenawlandtrust.org/>

Keweenaw Sustainability Project—Susan Burack

<http://www.keweenawsustainability.org/>

Michigan Nature Association – Joan Chadde

<http://www.michigannature.org/>

North Woods Conservancy

<http://www.northwoodsconservancy.org/NWC/Home.html>

Sustainable Keweenaw Resource Center –Rick Ladoha

<http://www.finlandia.edu/index.php?id=3042>

The Nature Conservancy

<http://www.nature.org/?kw=msn>

Upper Peninsula Environmental Coalition – Sherry Zoars

<http://www.upenvironment.org/>

Contact: Pete Ekstrom
[pekstrom \(at\) rhodes.edu](mailto:pekstrom@rhodes.edu)
phone 523-5338

